

Wheels on Transit

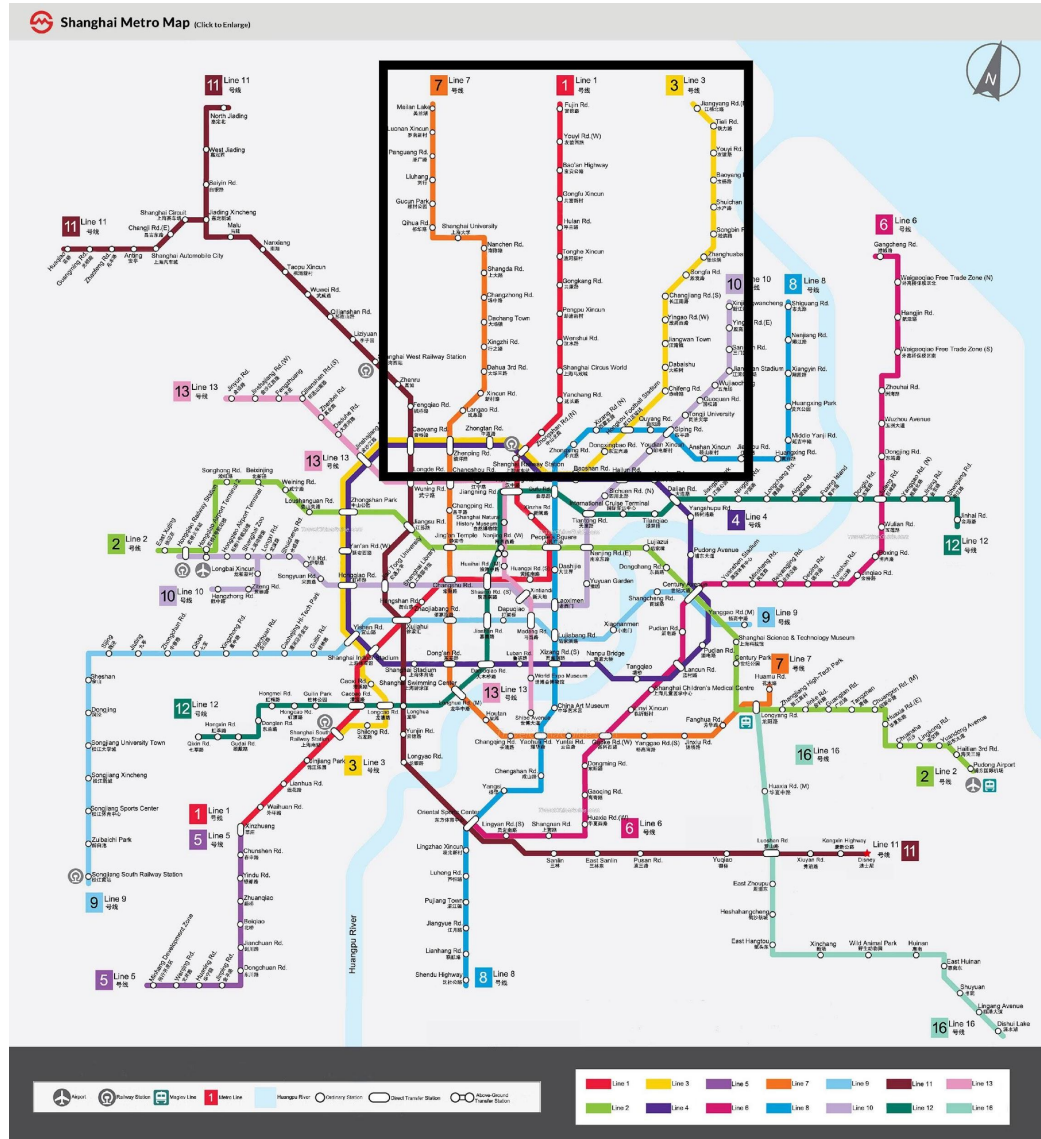
How can we improve
transit/bicycle modal split?

Improve the trip chain

Build and strengthen the
bicycle parking missing link

Existing “Bicycle - Transit - Bicycle” System

Shanghai trip chain example

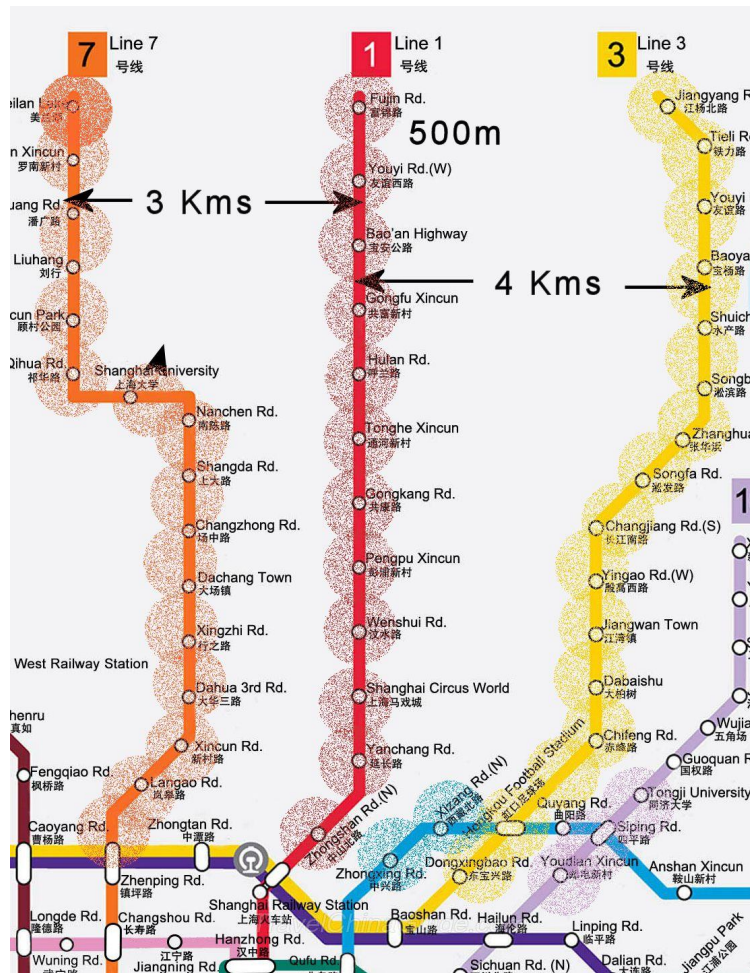


- ▶ Subway System
- ▶ 30 Million people
- ▶ Flat terrain

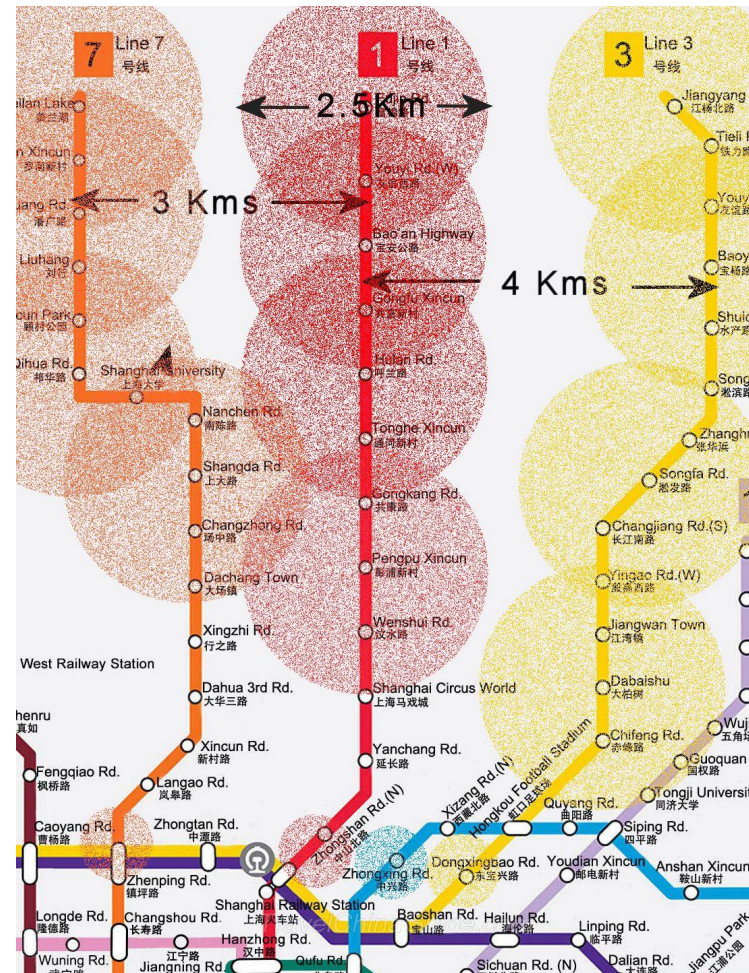
Walking vs. Cycling Catchment Areas

North Shanghai example

Walking Catchment



Cycling Catchment



Dockless Bikeshare Revolution 10+ Million bikes in programs

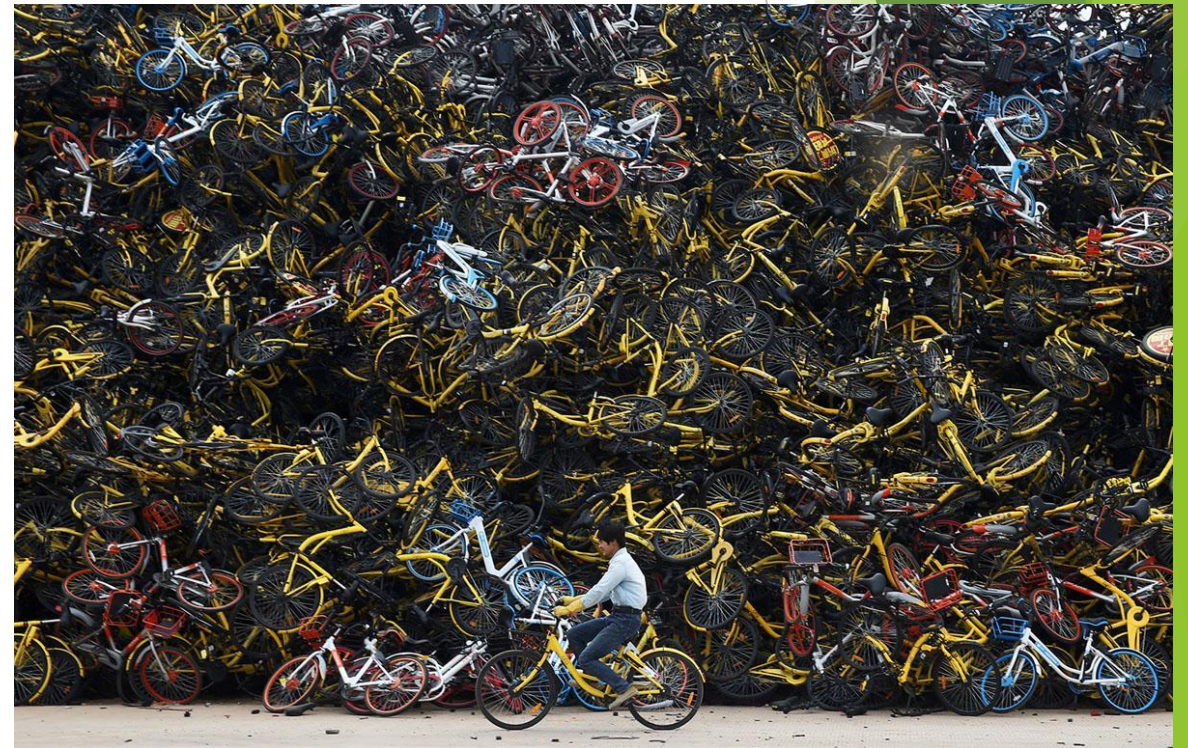
Lack of proper “bike parking” is the weak link in the trip chain



Transit/Dockless Bikeshare is working



But lack of bicycle ownership creates problems in cities of 30 million



Copenhagen is about travel times and safety



- Suburban route separation 4-5 km
... same as Shanghai
- Bike ownership is high
- Weather can be poor at times
- Evolving infrastructure that improves the trip chain: Reduce the time to change modes
- Faster travel times and efficient

How.....

Sheltered and Secure parking Just better parking?



Bikes and Strollers : Subways and Trains

cycling straight to platform saves time and effort
no chance of bike theft while bicycle is parked at station
you can cycle at the end of transit travel, saving more time

- Level Boarding
- Elevators
- Adaptable Cars



Why don't Canadians cycle to transit?

1. Fear of traveling on unsafe roads to transit nodes on bicycles.
2. Fear of bike theft in urban centers. Fear of lost property.
3. No secure or sheltered parking at transit nodes
4. No level boarding for access on trains
5. No adaptable train cars to carry bicycles.

So what is the “Ask” to the Gov’t?

1. Fear traveling on unsafe roads to transit nodes on bicycles.

Separated Municipal Infrastructure to allow safe passage (matching funds)

2. Fear of high bike theft in urban centers. Fear of lost property.

No secure or sheltered parking at transit nodes

Sheltered and Secure bicycle parking (matching funds)

3. No level boarding for access on trains

Coming Soon?

4. No adaptable train cars to carry bicycles.

Need 1,2, and 3 first, then train cars for bicycles.

Improve the Trip Chain

Industry Solution

